

CABLE FENCING



**Digger
Specialties
Inc.**

Transforming the Outdoor Living Experience®

BENEFITS & COLORS



Lifetime Limited Warranty

Digger Specialties, Inc. is proud to offer one of the strongest warranties in the industry. Our Aluminum Lifetime Limited Warranty and our Vinyl Transferable Lifetime Limited Warranty demonstrates our faith in our product and our commitment to you.



**Click QR Code
to view and register a
DSI warranty or visit
the DSI website.**



Committed to the Environment and our Community

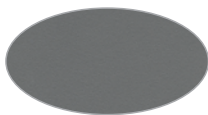
DSI is proud to be an environmentally aware company that continues to update practices to reduce our carbon foot-print. DSI consistently recycles cardboard, wood, steel banding, zinc die cast, and heat shrink scrap. DSI also utilizes both aluminum and vinyl extrusions that contain recycled content. DSI is pleased to support our community by outsourcing a portion of our packaging functions to a local company that provides meaningful employment to individuals with disabilities.

Aluminum Colors

Textured Colors



White Fine Texture



Grey Fine Texture



Bronze Fine Texture



Brown Fine Texture



Black Fine Texture

Non Textured Colors



Gloss White



Gloss Beige



Sandy Shore



Ninety Bronze



Speckled Walnut



Chocolate



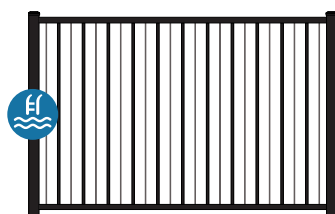
Satin Black



MODELS & PRODUCT DETAILS

Discover DSI Cable Fencing, the perfect blend of security and elegance. Our design incorporates vertical pickets and stainless steel cables, providing an architectural aesthetic that maintains the beauty of your view without compromising on safety.

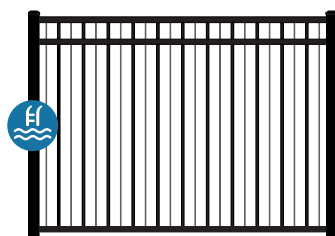
2-RAIL



Flush Bottom Pool

Models	Heights
CF220 Pool	48-1/2"

3-RAIL



Flush Bottom
54" height

Models	Heights
CF230	48", 54"



Pool Code Approved

Fence models marked with this symbol comply with ASTM F2409 and F1908 for height and spacing. Check with your local building code officials as local codes may differ.

Product Details

	Cable Fencing
Heights	2-Rail: 48-1/2" 3-Rail: 48", 54"
Section Width	6' Centers
Rails	1-3/4"W (.090") x 1-3/8"H (.085") Top Rail 1-3/4"W (.125") x 1-1/4"H (.100") Mid and Bottom Rail
Infill	5/8" (.188") Round Pickets and 1/8" (316 Grade) Stainless Steel Cables w/3" Center to Center Spacing
Section Racking	Standard Sections Rack 12" in 6'
Section Posts	Line and End: 2-1/2" x 2-1/2" (.090") Corner and 3-Way: 3" x 3" (.095")
Gate Posts	End and Blank: 2-1/2" x 2-1/2" (.090") w/ Stiffener = .215" 2-1/2" x 2-1/2" (.125")
Post Caps	Flat Caps: 2-1/2", 3"
Single Gate Opening Sizes	36", 42", 48", 60", 72"

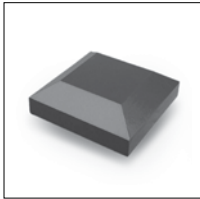
Heights include 2" ground clearance.

diggerspecialties.com

ACCESSORIES & GATE HARDWARE



Post Cap

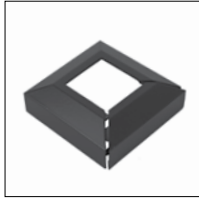


Flat Cap
2-1/2", 3"

Post Mounts & Flairs



Welded Plate Option



Post Flair (2-piece)
2-1/2", 3"
For Welded Plate Option
& Core Drilled Posts

Mounts



Double Swivel Mount

Hinges



Tru-Close Hinge

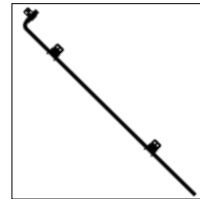


Kwik Fit Hinge



SS Med Duty Hinge

Canebolt



Canebolt
(Drop Pin Kit)

Latches



Lokk Latch



Lokk Latch Deluxe



Lokk Latch Magnetic



Magna Latch
Vertical Pull 6"



Magna Latch
Top Pull 20-1/4"



SS Gravity Latch

Stay Connected
diggerspecialties.com



We have tried to make this brochure comprehensive and factual. We reserve the right to discontinue at any time, without notice, colors, materials, equipment, and availability. Since some information may have been updated since the time of printing, we are not responsible for typographical or pictorial errors. Materials shown may vary slightly from actual colors and photos may show optional items. ©Digger Specialties, Inc. 2024/07 BR007